

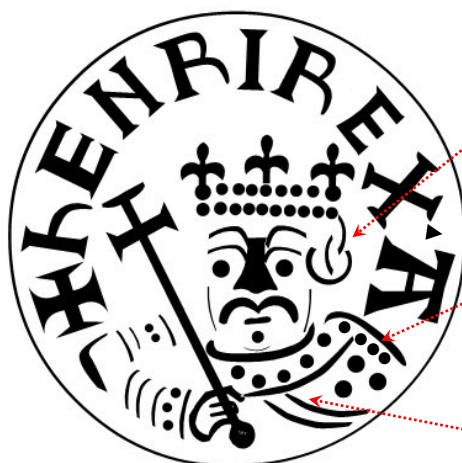
Tealby Class D1 & D3; c.1167 -c.1170

Moneyer HENRI

No Bury coins have been recorded from class D2

Diagnostic features of this class outlined in red.

Class D1



One or occasionally two curls to the right side of the king's portrait

Jewelled collar continues over the king's left shoulder

King's tunic sweeps down from the King's right shoulder

Class D3



Trefoil of pellets near the edge of the mantle

Class D c.1167-c.1170

Moneyer HENRI

✠HENRI:REX

✠HENRI:ON:V:EDMV

D1



Eaglen 61 ; BMC -; (9)



Reclining
letter S

✠HENRI [---]

✠HENRI:ON:S:EDMV

D1



Eaglen 62 ; BMC 27; (3)



✠HEN REX TH

✠HENRI:ON:S:EDMV

D3
Obverse N2



Eaglen 63 N2; BMC 24-26; (8)



D3
Obverse N1



Eaglen 63 N1; BMC 24-26; (3)

Eaglen's obverse die number 63 exists in two forms, N1 with a thin sceptre handle, and N2 with a much thicker handle. The thinner features seen on N1 are likely to have been the result of die repairs (*filing down of the die face*) resulting in the finer details of the die becoming more faint and deeper details becoming thinner. The dies are thus shown in the order N2– N1 ¹Refire work published by Lord Stewartby in the Bibliophagy section.